

**White City Water  
Improvement District  
Meeting of the  
Staff Planning /  
Board of Trustees**

**April 15, 2026**

**5:00 p.m.**

R900 Propagation Analysis  
White City Water Improvement District-  
Sandy, UT

January 16, 2026

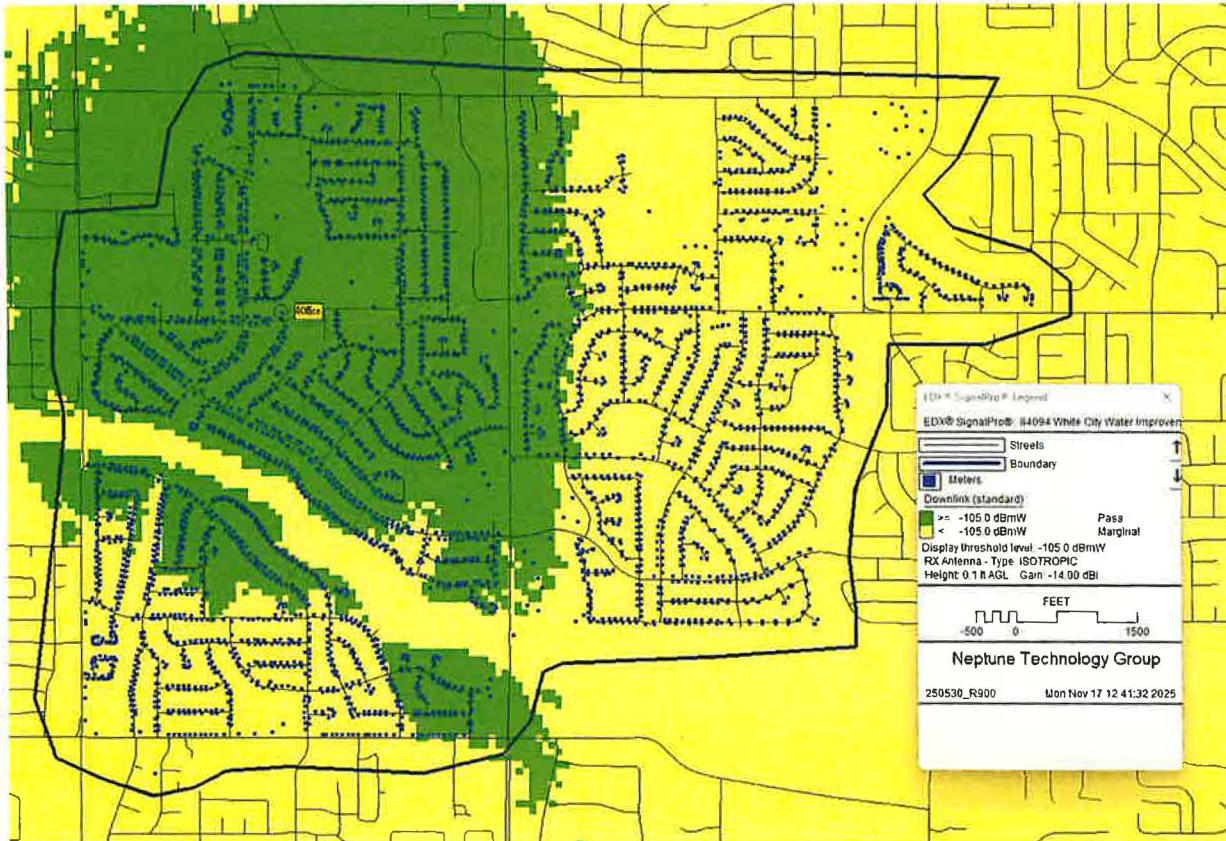


# Predicted Coverage Results:

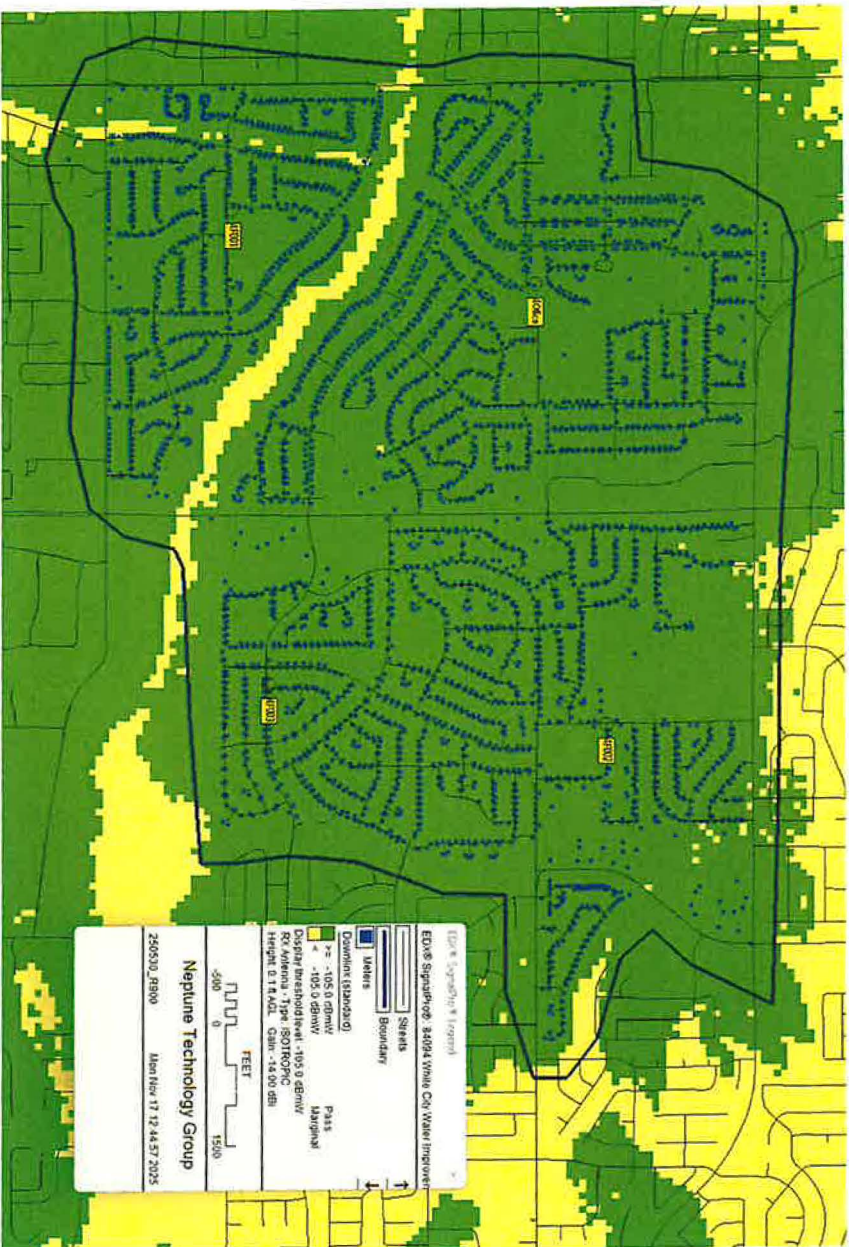


Map	Description	Provided Services		4,230	Geocoded Services		4,221	Area (sq Miles)	3.00
		#Coll	MIU Type	Read Type	Projected	% Projected	Projected	% Projected	
1	Provided Assets - 35ft	1	R900v4 Pit	Billing	2,017	47.78%	1.30	43.31%	
2	>99% Coverage - 35ft	4	R900v4 Pit	Billing	4,218	99.92%	2.89	96.23%	
3	Provided Assets - 50ft	1	R900v4 Pit	Billing	2,271	53.80%	1.45	48.31%	
4	>99% Coverage - 50ft	3	R900v4 Pit	Billing	4,181	99.05%	2.83	94.16%	

# Map 1: Provided Assets – 35ft

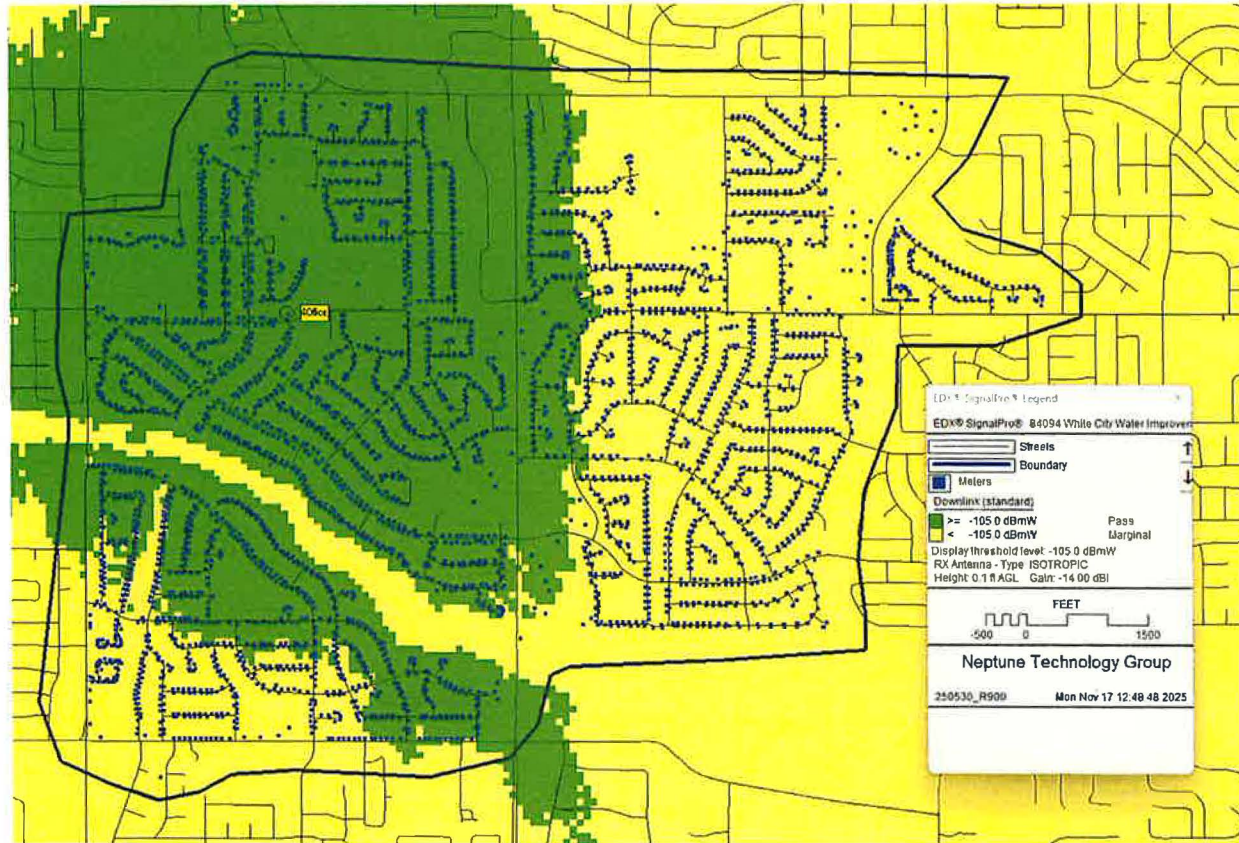


# Map 2: >99% predicted - 35ft

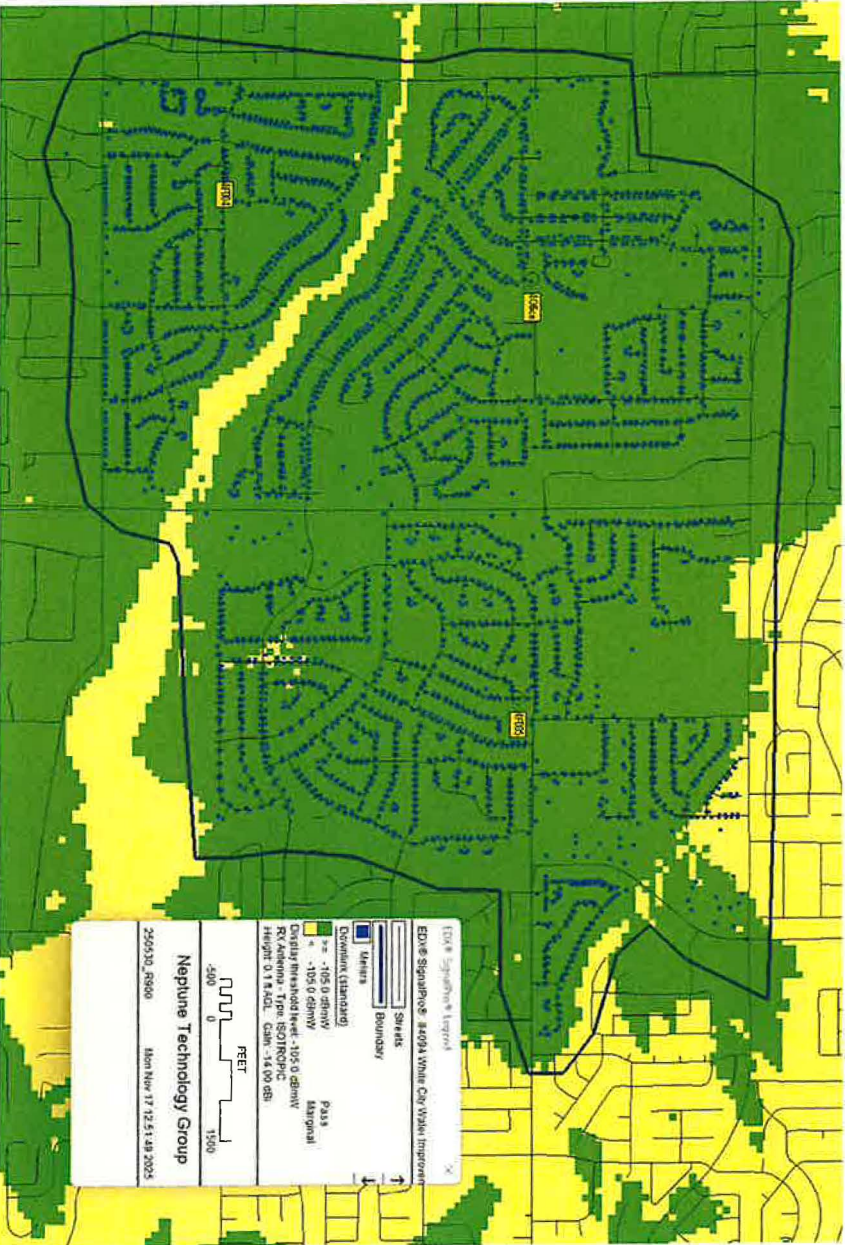
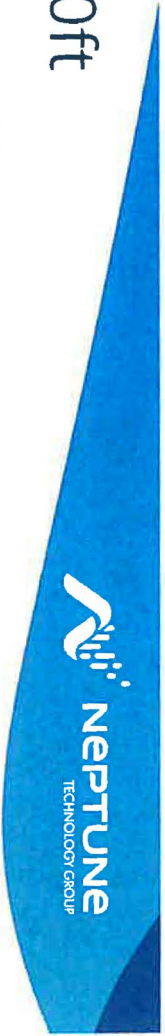


Confidential Information

# Map 3: Provided Assets – 50ft

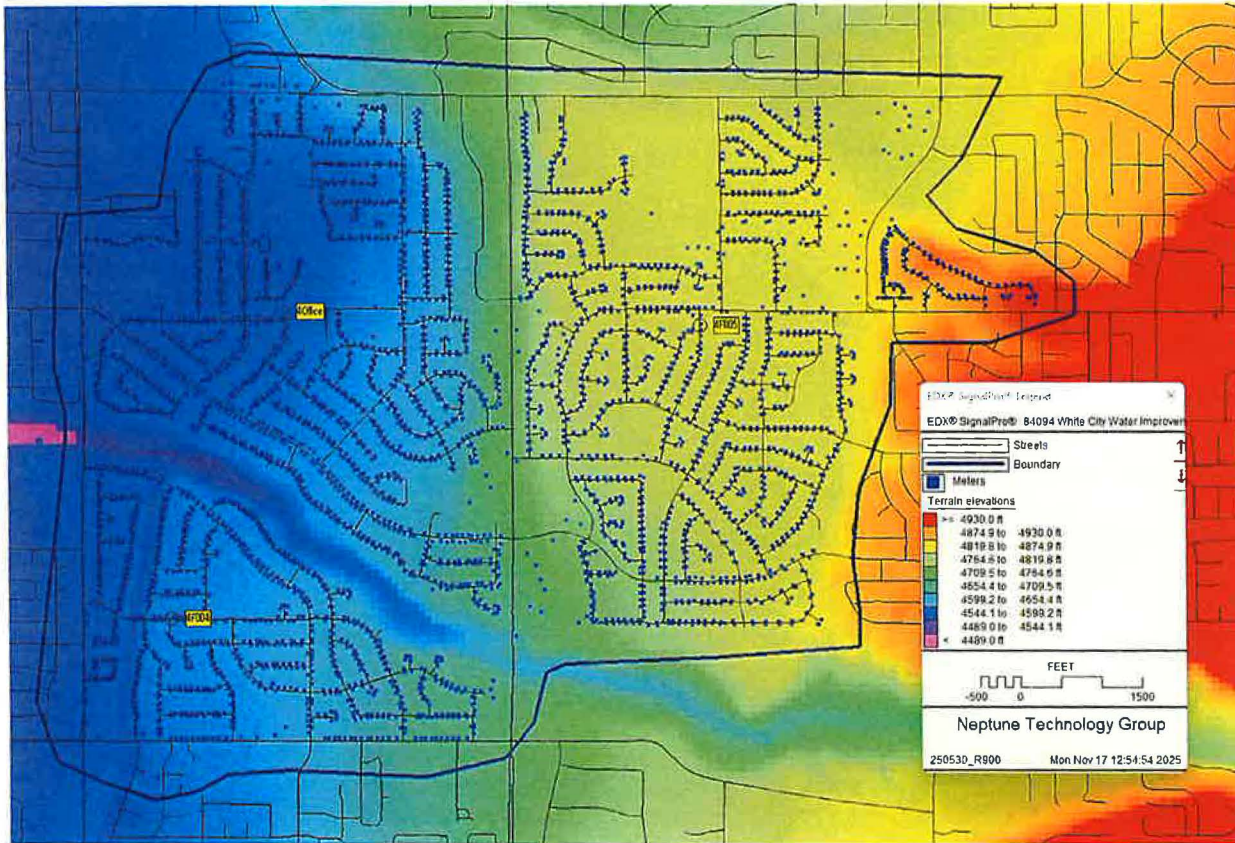


# Map 4: >99% predicted - 50ft



Confidential Information

# Elevation Map (National Elevation Dataset available, courtesy of the U.S. Geological Survey)



# Gateway Locations:

Map	Location	Latitude	Longitude	Collector	Elev(m)	AntHgt(m)	Elev(ft)	AntHgt(ft)	Coax Type	Coax(ft)	Antenna
1,2,3,4	4Office	40.573132	-111.86324	GPV4	1387	15	4551	50	LDF4	50	MFB9155
2	4F001	40.562975	-111.866655	GPV4	1397	11	4583	35	LDF4	35	MFB9155
2	4F002	40.575505	-111.843762	GPV4	1464	11	4803	35	LDF4	35	MFB9155
2	4F003	40.564187	-111.845666	GPV4	1452	11	4764	35	LDF4	35	MFB9155
4	4F004	40.562823	-111.868242	GPV4	1395	15	4577	50	LDF4	50	MFB9155
4	4F005	40.57266	-111.844754	GPV4	1462	15	4797	50	LDF4	50	MFB9155

## Assumptions:

- Spare gateway recommended for system maintenance.
- Revised propagation analysis required for Gateway location or height changes.
- FAA/ASR may be required for structures near airports or heights >200ft.
- AM Tower detuning evaluations for structures within 3km, check with LBA Group or Sitesafe.
- 10ft minimum vertical separation from other 900MHz system antennas on structure. Antenna requires 3ft-4ft standoff for side mounting on towers.
- Complies with FCC/IC Rules: May not cause harmful interference, and must accept any interference received, including interference that may cause undesired operation.
- MIUs mounted inside structures are not recommended for Fixed Network solutions. RF signal is affected differently by building materials used within structures and it is difficult to account for all types of construction. If the Scope states inside MIU used for study, an average loss value is applied to the model. In situations, where inside MIUs do not perform as necessary, an external wall MIU or additional Gateways may be required
- Propagation based on defined MIU (External Wall or Pit w/External Antenna) with specified gateway/collector. Older equipment should be replaced. Propagation is subject to change based on equipment specifications and performance. Performance cannot be confirmed until final system evaluation and analysis complete. Daily - 1 read in 24 hours (1 Day) expected; Billing - 1 read in 72 hours (3 Days) expected; Hourly - 1 read each hour expected. Propagation model is based on performance for >90% read success; backfill read redundancy included, and typical RF environment <-120dBm. Use of this propagation analysis done with this understanding and there is no guarantee of product or performance. Additional gateways could be required. Antenna heights are set to 75 feet as default unless heights provided. This affects Find (search ring) and asset locations.
- R900 IoT gateway (Tmega) with 2 antenna receiver diversity requires minimum of 6 feet horizontal and ideally 12-20 feet horizontal antenna separation.



# Pricing Overview

**Prepared for:** White City Water Improvement District

**Prepared by:** Yoppify

**Date:** March 2026

## SUMMARY OF OBJECTIVES

We appreciate the opportunity to continue exploring our partnership. Your staff and trustees identified several important use cases that we took into account in preparing this pricing estimate. We understand that your immediate priority is to address these core needs and that there may be opportunities to expand our work together over time. Based on your current processes and priorities, the following use cases were considered. Please let us know if we missed anything.

### Use cases considered:

- **Boil Water Notices and Emergency Water Alerts:** Send urgent notifications during water quality events, line breaks, pressure loss, or other critical situations that require immediate customer communication.
- **Field Notifications:** Allow staff to send updates directly from the field as situations develop, without returning to the office.
- **Utility Billing Notifications:** Send targeted notifications to individual accounts for past-due balances, shutoff warnings, payment reminders, and other billing-related communication.
- **Planned Maintenance and Service Work:** Proactively notify customers about scheduled repairs, maintenance activity, or temporary disruptions before work begins.
- **Map Based Location Selections:** Use a map to create a geo-fence around service locations you would like to notify.

Subscription + Fees	Price
<p><b>Yoppify Platform &amp; Services</b> (Annual Payment)</p> <ul style="list-style-type: none"> <li>• Broadcast System Package               <ul style="list-style-type: none"> <li>◦ Broadcast Limit (5000 contacts)</li> <li>◦ Basic Messaging Credits (Web, SMS, Voice, Email)</li> <li>◦ Notices, Events, Public Resources</li> <li>◦ AI Message Generator</li> <li>◦ AI Text-to-speech</li> <li>◦ Two-way Conversations</li> </ul> </li> </ul>	\$9,005
<b>Total Annual Cost</b>	<b>\$9,005</b>
<p><b>Confidentiality Notice:</b> This pricing estimate is for your agency only. Please don't share it without permission from Yoppify.</p> <p><b>Terms &amp; Conditions:</b> This estimate is based on current costs for Yoppify's service packages. This estimate is valid for 60 days from the date of issue. After 60 days, pricing and terms may change.</p> <p><b>Messaging Credits:</b> Estimates are based on typical messaging activity. If usage changes notably, we may check in during the year, though updates are usually handled at renewal.</p> <p><b>Printed Mailers:</b> Letters and postcards sent through the Yoppify platform will be billed separately. Rates include current postage and printing fees and will be updated periodically to reflect changes in postage costs. Current rates are <b>\$1.25</b> per postcard and <b>\$1.60</b> per letter.</p>	

# Proactive Communication made Simple.



385-200-9677  
info@yoppify.com